



2024 CATALOGUE HC SERIES



In 2004, Cabinets by Hayley was founded out of the need for better. Through their racing routes; a tougher, stronger and better-looking cabinet was not only a need, but a necessity. With over 40 years of experience in the oil and gas sector providing some of the industries leading electronic equipment and industrial cabinetry, it was an easy addition to create some of the nest garage cabinets the market had ever seen. Whether it was getting to the race track after long nights getting ready, or the perfect centerpiece to compliment your man cave, the challenge was to achieve both. The focus became on a product that not only looked spectacular, but could also withstand the test of time.



After over 15 years in the business and 3 generations of Hayley's, the need became a reality as Cabinets by Hayley has become a household name amongst the rough and tumble working garage to the luxury showroom. They have prided themselves on their family owned service and design expertise while continually evolving in the market with the latest and greatest trends and wants. With now over one thousand parts, and countless man hours into the details, Cabinets by Hayley can say that they have the tools and experience to create the

MORE THAN STORAGE. IT'S AN INVESTMENT

DURABLE FINISH

All cabinets are powder coated with a durable textured finish that resists fingerprints and scuffing.



DESIGN

Strength and beauty go hand in hand with double sided doors and brushed aluminum accents providing a spectacular appearance and superior performance.

NORTH AMERICAN MADE

Proudly designed, fabricated, powder coated, and assembled in North America. You can be assured that our quality products will stand the test of time.

STRENGTH

Our Cabinets are manufactured using 16 gauge high quality Canadian steel for a solid feel and ultimate durability that will last a lifetime.

FLEXIBILITY

All of our cabinets are modular in design and are available in a variety of heights, widths, and depths enabling designs to create functional spaces.

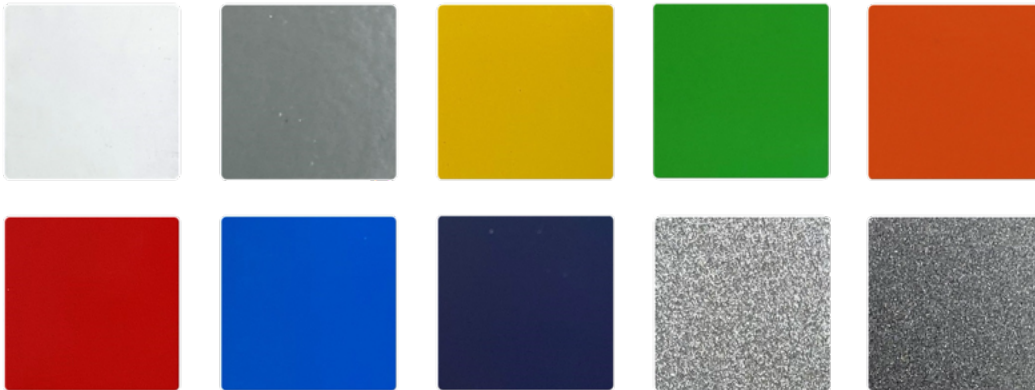


VERSATILE

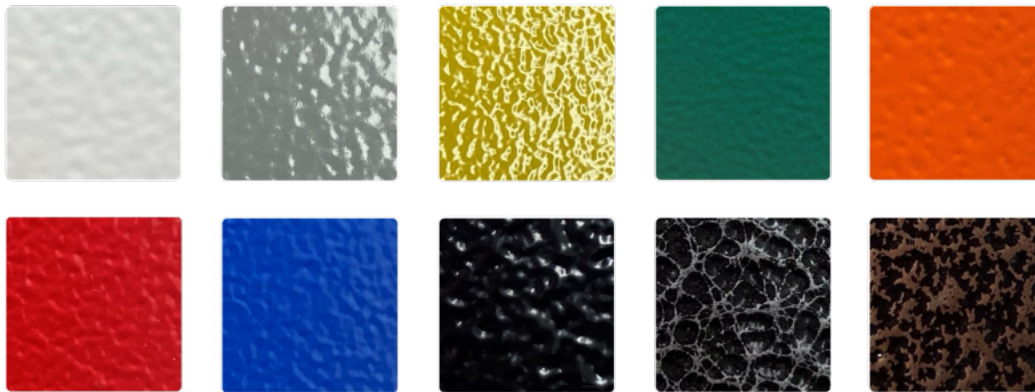
We have two lines of cabinets and a variety of specialty products to utilize your available space efficiently.

COLORS

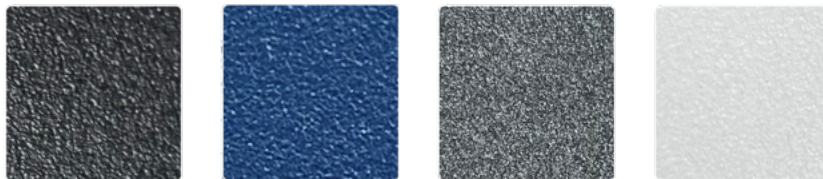
Smooth



Textured



Sandtex



COUNTERTOP MATERIAL

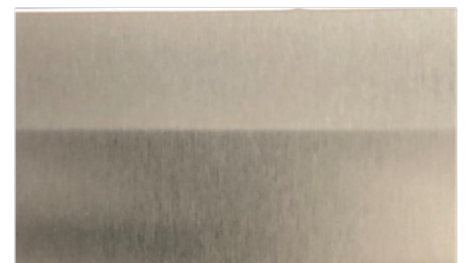
Your choice of galvanized 12g steel, powder coated 12g steel, or 16g stainless steel countertops can be installed on your cabinet set.



Galvanized 12g Steel



Powder Coated 12g Steel



16g Stainless Steel



HC SERIES

HC SERIES PREMIUM GARAGE CABINETS



- 100% modular for expandability
- Built-In or Free-Standing options
- Constructed from 16GA steel
- Durable double-sided doors
- Stainless steel full-length hinges
- Chrome or black latches; lock or non-lock
- 130lb full extension ball bearing slides
- Height adjustable shelves
- Free-standing legs
- Fully integrated lighting and switch
- Durable textured powder coated nish
- Available in 24 standard colors
- Custom colors available
- Integrated power and USB options
- Counter and backsplash options



19" UPPER SINGLE DOOR

PART #	HEIGHT	WIDTH	DEPTH	WEIGHT
<i>HC 181914</i>	18"	19"	14"	35LBS
<i>HC 241914</i>	24"	19"	14"	40LBS
<i>HC 301914 U</i>	30"	19"	14"	50LBS
<i>HC 181924</i>	18"	19"	24.5"	50LBS
<i>HC 241924</i>	24"	19"	24.5"	65LBS
<i>HC 301924 U</i>	30"	19"	24.5"	70LBS



24" UPPER STANDARD

PART #	HEIGHT	WIDTH	DEPTH	WEIGHT
<i>HC 182414</i>	18"	24"	14"	45LBS
<i>HC 242414</i>	24"	24"	14"	60LBS
<i>HC 302414</i>	30"	24"	14"	75LBS
<i>HC 182424</i>	18"	24"	24.5"	70LBS
<i>HC 242424</i>	24"	24"	24.5"	100LBS
<i>HC 302424</i>	30"	24"	24.5"	120LBS



28" UPPER STANDARD

PART #	HEIGHT	WIDTH	DEPTH	WEIGHT
<i>HC 182814</i>	18"	28"	14"	50LBS
<i>HC 242814</i>	24"	28"	14"	70LBS
<i>HC 302814 U</i>	30"	28"	14"	85LBS
<i>HC 182824</i>	18"	28"	24.5"	90LBS
<i>HC 242824</i>	24"	28"	24.5"	125LBS
<i>HC 302824 U</i>	30"	28"	24.5"	140LBS



34" UPPER STANDARD

PART #	HEIGHT	WIDTH	DEPTH	WEIGHT
<i>HC 183414</i>	18"	34"	14"	55LBS
<i>HC 243414</i>	24"	34"	14"	75LBS
<i>HC 303414 U</i>	30"	34"	14"	90LBS
<i>HC 183424</i>	18"	34"	24.5"	95LBS
<i>HC 243424</i>	24"	34"	24.5"	130LBS
<i>HC 303424 U</i>	30"	34"	24.5"	155LBS
<i>HC 453424</i>	45"	34"	24.5"	LBS



48" UPPER DOUBLE DOOR

PART #	HEIGHT	WIDTH	DEPTH	WEIGHT
<i>HC 184814</i>	18"	48"	14"	80LBS
<i>HC 244814</i>	24"	48"	14"	110LBS
<i>HC 304814 U</i>	30"	48"	14"	150LBS
<i>HC 184824</i>	18"	48"	24.5"	110LBS
<i>HC 244824</i>	24"	48"	24.5"	190LBS
<i>HC 304824 U</i>	30"	48"	24.5"	240LBS



51" UPPER TRIPLE DOOR

PART #	HEIGHT	WIDTH	DEPTH	WEIGHT
<i>HC 185114</i>	18"	51"	14"	90LBS
<i>HC 245114</i>	24"	51"	14"	120LBS
<i>HC 305114 U</i>	30"	51"	14"	150LBS
<i>HC 185124</i>	18"	51"	24.5"	120LBS
<i>HC 245124</i>	24"	51"	24.5"	150LBS
<i>HC 305124 U</i>	30"	51"	24.5"	180LBS



54" UPPER QUAD DOOR

PART #	HEIGHT	WIDTH	DEPTH	WEIGHT
<i>HC 185424</i>	18"	54"	24.5"	130LBS
<i>HC 245424</i>	24"	54"	24.5"	160LBS
<i>HC 305424</i>	30"	54"	24.5"	LBS

*To go on top of 54" closet



66" UPPER QUAD DOOR

PART #	HEIGHT	WIDTH	DEPTH	WEIGHT
<i>HC 186624</i>	18"	66"	24.5"	130LBS
<i>HC 246624</i>	24"	66"	24.5"	160LBS
<i>HC 306624</i>	30"	66"	24.5"	LBS

*To go on top of 66" closet



19" LOWER STANDARD

PART #	HEIGHT	WIDTH	DEPTH	WEIGHT
<i>HC 301924*</i>	30"	19"	24.5"	75LBS

*Free Standing legs and countertop not included.
Cabinet available in left and right hand door swing.



19" LOWER SINGLE DRAWER

PART #	HEIGHT	WIDTH	DEPTH	WEIGHT
<i>HC 301924 D1*</i>	30"	19"	24.5"	95LBS

*Free Standing legs and countertop not included.
Cabinet available in left and right hand door swing.



19" LOWER DOUBLE DRAWER

PART #	HEIGHT	WIDTH	DEPTH	WEIGHT
<i>HC 301924 D2*</i>	30"	19"	24.5"	125LBS

*Free Standing legs and countertop not included.
Cabinet available in left and right hand door swing.



24" LOWER STANDARD

PART #	HEIGHT	WIDTH	DEPTH	WEIGHT
HC 302424	30"	24"	24.5"	110LBS

*Free Standing legs and countertop not included.
Cabinet available in left and right hand door swing.



28" LOWER STANDARD

PART #	HEIGHT	WIDTH	DEPTH	WEIGHT
<i>HC 302824*</i>	30"	28"	24.5"	120LBS

*Free Standing legs and countertop not included.



28" LOWER SINGLE DRAWER

PART #	HEIGHT	WIDTH	DEPTH	WEIGHT
<i>HC 302824 D1*</i>	30"	28"	24.5"	150LBS

*Free Standing legs and countertop not included.



28" LOWER DOUBLE DRAWER

PART #	HEIGHT	WIDTH	DEPTH	WEIGHT
<i>HC 302824 D2*</i>	30"	28"	24.5"	160LBS

*Free Standing legs and countertop not included.



34" LOWER STANDARD

PART #	HEIGHT	WIDTH	DEPTH	WEIGHT
HC 303424*	30"	34"	24.5"	125LBS

*Free Standing legs and countertop not included.



34" LOWER SINGLE DRAWER

PART #	HEIGHT	WIDTH	DEPTH	WEIGHT
HC 303424 D1*	30"	34"	24.5"	155LBS

*Free Standing legs and countertop not included.



34" LOWER DOUBLE DRAWER

PART #	HEIGHT	WIDTH	DEPTH	WEIGHT
HC 303424 D2*	30"	34"	24.5"	165LBS

*Free Standing legs and countertop not included.

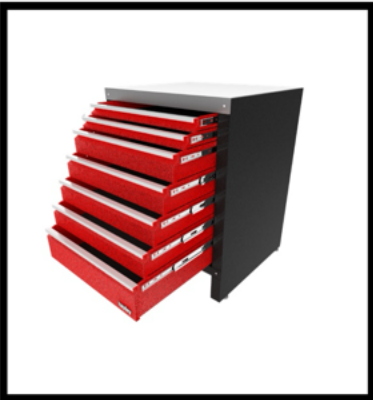


19" TOOL CHEST

PART #	HEIGHT	WIDTH	DEPTH	WEIGHT
HC 301924 D6*	30"	19"	24.5"	225LBS

*Free Standing legs and countertop not included.

*Six Drawer Conguration: 2x2" ~ 3x4" ~ 1x10"

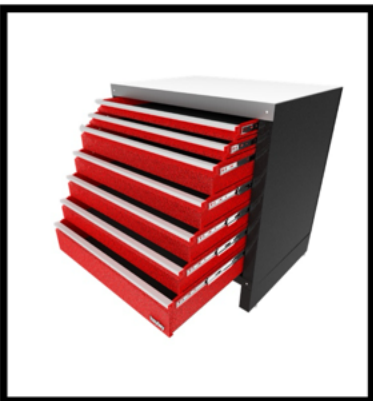


28" TOOL CHEST

PART #	HEIGHT	WIDTH	DEPTH	WEIGHT
HC 302824 D7*	30"	28"	24.5"	250LBS

*Free Standing legs and countertop not in-

*Seven Drawer Conguration: 2x2" ~ 4x4" ~ 1x6"

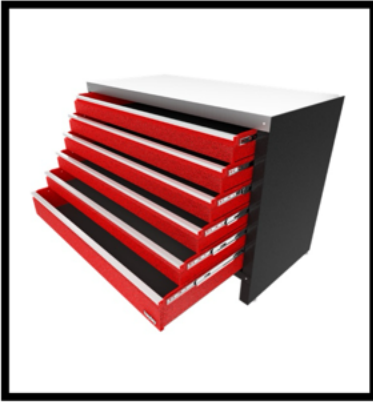


34" TOOL CHEST

PART #	HEIGHT	WIDTH	DEPTH	WEIGHT
HC 303424 D7*	30"	34"	24.5"	260LBS

*Free Standing legs and countertop not includ-

*Seven Drawer Conguration: 2x2" ~ 4x4" ~ 1x6"

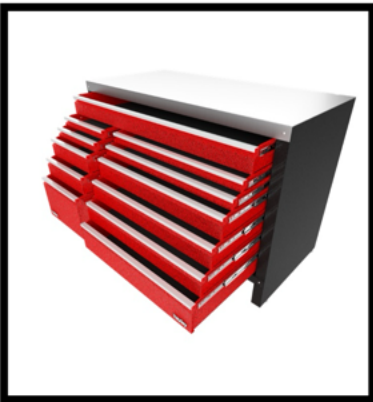


51" TOOL CHEST

PART #	HEIGHT	WIDTH	DEPTH	WEIGHT
HC 305124 D6x	30"	51"	24.5"	350LBS

*Free Standing legs and countertop not included.

xSix Drawer Conguration: 5x4" ~ 1x6"



51" TOOL CHEST

PART #	HEIGHT	WIDTH	DEPTH	WEIGHT
HC 305124 D12x	30"	51"	24.5"	420LBS
HC 365124 D16xx	36"	51"	24.5"	600LBS

*Free Standing legs and countertop not in-

xTwelve Drawer Conguration: TOP: 1x4"

LEFT: 2x2" ~ 2x4" ~ 1x10" RIGHT: 2x2" ~ 3x4" ~ 1x6"

xxSixteen Drawer Conguration: TOP: 1x4"

LEFT: 3x2" ~ 3x4" ~ 1x10" RIGHT: 3x2" ~ 4x4" ~ 1x6"



51" TALL TOOL CHEST

PART #	HEIGHT	WIDTH	DEPTH	WEIGHT
HC 512824 D10x	51"	28"	24.5"	360LBS
HC 513424 D10x	51"	34"	24.5"	390LBS

*Free Standing legs and countertop not included.

xTen Drawer Conguration: 2x2" ~ 4x4" ~ 3x6" ~ 1x10"



54" TOOL CHEST

PART #	HEIGHT	WIDTH	DEPTH	WEIGHT
<i>HC 455424 D16</i>	45"	54"	24.5"	500LBS

*Free Standing legs and countertop not included.



19" SINGLE DRAWER GARBAGE BIN

PART #	HEIGHT	WIDTH	DEPTH	WEIGHT
HC 301924 GB	30"	19"	24.5"	95LBS

*Free Standing legs and countertop not included.

*Comes with: 2- black garbage bins



19" SINGLE DRAWER PARTS BIN

PART #	HEIGHT	WIDTH	DEPTH	WEIGHT
HC 301924 PB	30"	19"	24.5"	125LBS

*Free Standing legs and countertop not included.

*Comes with: 20- Small poly bins (5")

20- Large poly bins (7")



19" UTILITY CABINET

PART #	HEIGHT	WIDTH	DEPTH	WEIGHT
HC 301924 UT	30"	19"	24.5"	125LBS

*Free Standing legs and countertop not included.

*Comes with: 6P: Six outlets



19" SINGLE DRAWER HOSE REEL

PART #	HEIGHT	WIDTH	DEPTH	WEIGHT
<i>HC 301924 HR</i>	30"	19"	24.5"	130LBS
<i>HC 301924 HRHD</i>	30"	19"	24.5"	140LBS

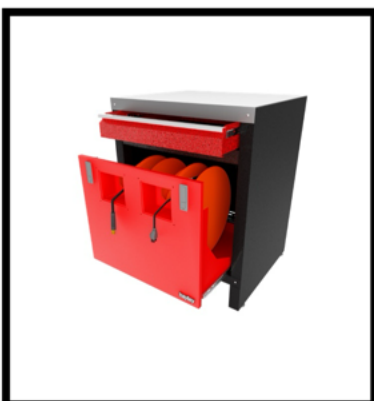
*Free Standing legs and countertop not included.



19" SINGLE DRAWER POWER REEL

PART #	HEIGHT	WIDTH	DEPTH	WEIGHT
<i>HC 301924 PRHD</i>	30"	19"	24.5"	150Bs

*Free Standing legs and countertop not included.



28" SINGLE DRAWER HOSE AND POWER REEL

PART #	HEIGHT	WIDTH	DEPTH	WEIGHT
<i>HC 302824 HPRHD</i>	30"	28"	24.5"	225LBS

*Free Standing legs and countertop not included.



36" TALL FREE STANDING DOOR CABINET

PART #	HEIGHT	WIDTH	DEPTH	WEIGHT
<i>HC 362824 FSD</i>	36"	28"	24.5"	115LBS
<i>HC 363424 FSD</i>	36"	34"	24.5"	125LBS

*Countertop not included.



81" TALL FREE STANDING DOOR CLOSET

PART #	HEIGHT	WIDTH	DEPTH	WEIGHT
<i>HC 812824 FSD</i>	81"	28"	24.5"	240LBS
<i>HC 813424 FSD</i>	81"	34"	24.5"	260LBS



36" TALL FREE STANDING CABINET

PART #	HEIGHT	WIDTH	DEPTH	WEIGHT
<i>HC 362824 FS</i>	36"	28"	24.5"	95LBS
<i>HC 363424 FS</i>	36"	34"	24.5"	110LBS

*Countertop not included.



81" TALL FREE STANDING CABINET

PART #	HEIGHT	WIDTH	DEPTH	WEIGHT
<i>HC 812824 FS</i>	81"	28"	24.5"	190LBS
<i>HC 813424 FS</i>	81"	34"	24.5"	210LBS

*Countertop not included.



KNEE SPACE DRAWER

PART #	HEIGHT	WIDTH	DEPTH	WEIGHT
<i>HC 62824 D1</i>	6"	28"	24.5"	50LBS
<i>HC 62824 D2</i>	6"	28"	24.5"	60LBS
<i>HC 63424 D1</i>	6"	34"	24.5"	50LBS
<i>HC 63424 D2</i>	6"	34"	24.5"	60LBS

*Countertop not included.



FALSE FRONT SINK CABINET

PART #	HEIGHT	WIDTH	DEPTH	WEIGHT
<i>HC 302824 FF</i>	30"	28"	24.5"	130LBS
<i>HC 303424 FF</i>	30"	34"	24.5"	135LBS

*Countertop not included.



68" MOTORIZED TV CABINET

PART #	HEIGHT	WIDTH	DEPTH	WEIGHT
<i>HC 306810TV</i>	30"	68"	10"	400LBS

*Free Standing Legs and countertop not included.

*Requires 2- HC 303414 in front



68" MOTORIZED BAR CABINET

PART #	HEIGHT	WIDTH	DEPTH	WEIGHT
<i>HC 306810 BAR</i>	30"	68"	10"	400LBS

*Free Standing Legs and countertop not included.

*Requires 2- HC 303414 in front



45" TALL STACKABLE CLOSET

PART #	HEIGHT	WIDTH	DEPTH	WEIGHT
<i>HC 451924</i>	45"	19"	24.5"	125LBS
<i>HC 452824</i>	45"	28"	24.5"	150LBS
<i>HC 453424</i>	45"	34"	24.5"	175LBS

*Stackes on top of standard 30" lower cabinets



19" CLOSET

PART #	HEIGHT	WIDTH	DEPTH	WEIGHT
<i>HC 751914</i>	75"	19"	14"	180LBS
<i>HC 751924</i>	75"	19"	24.5"	200LBS

*Free Standing Legs not included.



24" CLOSET

PART #	HEIGHT	WIDTH	DEPTH	WEIGHT
<i>HC 752424</i>	75"	24"	24"	225LBS

*Free Standing Legs not included.



28" CLOSET

PART #	HEIGHT	WIDTH	DEPTH	WEIGHT
HC 752814	75"	28"	14"	200LBS
HC 752824	75"	28"	24.5"	250LBS

*Free Standing Legs not included.



34" CLOSET

PART #	HEIGHT	WIDTH	DEPTH	WEIGHT
HC 753414	75"	34"	14"	210LBS
HC 753424	75"	34"	24.5"	260LBS

*Free Standing Legs not included.



DOUBLE DOOR CLOSETS

PART #	HEIGHT	WIDTH	DEPTH	WEIGHT
HC 754814	75"	48"	14"	290Lbs
HC 754824	75"	48"	24.5"	340lbs
HC 755414	75"	54"	14"	340lbs
HC 755424	75"	54"	24.5"	390lbs
HC 756614	75"	66"	14"	475lbs
HC 756624	75"	66"	24.5"	525lbs

*Free Standing Legs not included.



UPPER CORNER

PART #	HEIGHT	WIDTH	DEPTH	WEIGHT
<i>HC 182424 C</i>	18"	24.5"	24.5"	75LBS
<i>HC 242424 C</i>	24"	24.5"	24.5"	90LBS
<i>HC 302424 C</i>	30"	24.5"	24.5"	110LBS



UPPER CORNER DOUBLE DOOR

PART #	HEIGHT	WIDTH	DEPTH	WEIGHT
<i>HC 183737</i>	18"	37.25"	37.25"	220LBS
<i>HC 243737</i>	24"	37.25"	37.25"	240LBS
<i>HC 303737 U</i>	30"	37.25"	37.25"	300LBS



LOWER CORNER CABINET

PART #	HEIGHT	WIDTH	DEPTH	WEIGHT
<i>HC 303737</i>	30"	37.25"	37.25"	300LBS

*Free Standing Legs and countertop not included.



OPEN CORNER DOOR BRACKET KIT

PART #	HEIGHT	WIDTH	DEPTH	WEIGHT
<i>HC 362824 OC</i>	36"	28"	24.5"	175LBS

- *Countertop not included.
- *Hinged side must be beside the corner.
- *Countertop that covers the cabinet must run into the corner.
- *Some assembly required



52" BLIND CORNER LOWER

PART #	HEIGHT	WIDTH	DEPTH	WEIGHT
<i>HC 305224 BCL</i>	30"	52.5"	24.5"	190LBS
<i>HC 305224 BCR</i>	30"	52.5"	24.5"	190LBS

- *Free Standing Legs and countertop not included.
- *Blind Corner Left: Shown
- *Blind Corner Right: Optional



58" BLIND CORNER LOWER

PART #	HEIGHT	WIDTH	DEPTH	WEIGHT
<i>HC 305824 BCL</i>	30"	58.5"	24.5"	215LBS
<i>HC 305824 BCR</i>	30"	58.5"	24.5"	215LBS

- *Free Standing Legs and countertop not included.
- *Blind Corner Left: Shown
- *Blind Corner Right: Optional



52" BLIND CORNER CLOSET

PART #	HEIGHT	WIDTH	DEPTH	WEIGHT
<i>HC 755224 BCL</i>	75"	52.5"	24.5"	475LBS
<i>HC 755224 BCR</i>	75"	52.5"	24.5"	475LBS

- *Free Standing Legs and not included.
- *Blind Corner Left: Shown
- *Blind Corner Right: Optional



58" BLIND CORNER CLOSET

PART #	HEIGHT	WIDTH	DEPTH	WEIGHT
<i>HC 755824 BCL</i>	75"	58.5"	24.5"	530LBS
<i>HC 755824 BCR</i>	75"	58.5"	24.5"	530LBS

- *Free Standing Legs not included.
- *Blind Corner Left: Shown
- *Blind Corner Right: Optional



52" BLIND CORNER UPPER

PART #	HEIGHT	WIDTH	DEPTH	WEIGHT
<i>HC 185224 BCL</i>	18"	52.5"	24.5"	190LBS
<i>HC 185224 BCR</i>	18"	52.5"	24.5"	190LBS

- *Blind Corner Left: Shown
- *Blind Corner Right: Optional



58" BLIND CORNER UPPER

PART #	HEIGHT	WIDTH	DEPTH	WEIGHT
<i>HC 185824 BCL</i>	18"	58.5"	24.5"	215LBS
<i>HC 185824 BCR</i>	18"	58.5"	24.5"	215LBS

*Blind Corner Left: Shown
 *Blind Corner Right: Optional

CABINETS HC STANDARD ROLLING CABINETS



TOOL CART

PART #	HEIGHT	WIDTH	DEPTH	WEIGHT
<i>TC 322218 D1</i>	32"	22"	18"	100LBS

*Price includes:

- Casters
- Counter not required



TOOL CART

PART #	HEIGHT	WIDTH	DEPTH	WEIGHT
<i>TC 363424 D1</i>	36"	34"	24.5"	125LBS
<i>TC 363424 D2</i>	36"	34"	24.5"	135LBS

*Price includes:

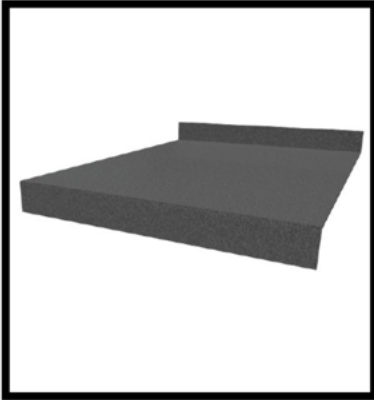
- Casters
- Hayley Tool Rack
- Hayley Screwdriver Rack
- Counter not required

Turn any HC lower into a rolling cabinet by adding four heavy duty castors and a handle.



We provide chrome pull handles and two swivel and two rigid castors. Each castor is capable of supporting 300lbs and each base is made to order, with holes spaced to perfectly balance the unit on the castors.

PART #	HEIGHT	WIDTH	DEPTH	WEIGHT
<i>HC 105</i>				50LBS



COUNTER TOPS

PART #	HEIGHT	WIDTH	DEPTH	WEIGHT
<i>HC 098 GA</i>	2 5/8" Lip	/foot	24.5"	12.5LBS
<i>HC 098 PC</i>	2 5/8" Lip	/foot	24.5"	12.5LBS
<i>HC 098 SS</i>	2 5/8" Lip	/foot	24.5"	18LBS

*Price per linear foot.
 GA: galvanized steel with plywood
 PC: powder coated with plywood
 SS: stainless steel with plywood



6" BASE CHANNEL

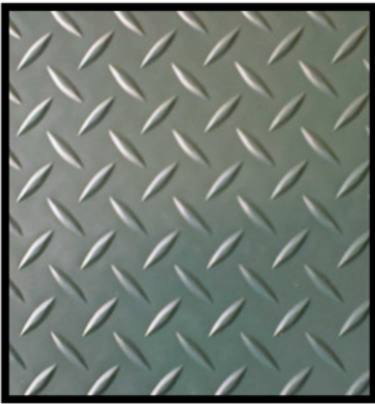
PART #	HEIGHT	WIDTH	DEPTH	WEIGHT
<i>HC 049</i>	6"	/foot	22"	9LBS

*Price per linear foot.
 *Power Coated Textured Black.



6" FREE-STANDING LEGS, EACH

PART #	HEIGHT	WIDTH	DEPTH	WEIGHT
<i>HC FSL 14</i>	6"	2"	14"	10LBS
<i>HC FSL 22</i>	6"	2"	22"	13LBS
<i>HC FSL 24</i>	6"	2"	24.5"	15LBS

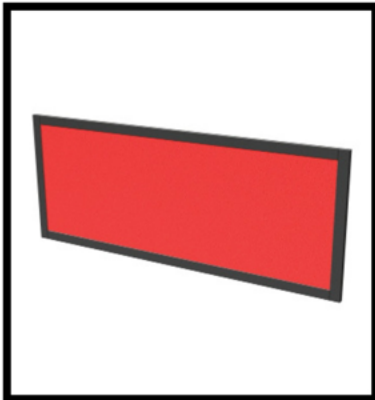


BACKSPLASH

PART #	HEIGHT	WIDTH	DEPTH	WEIGHT
CP 24	24" or less	/foot	1/8"	2LBS
CP 48	24" or more	/foot	1/8"	4LBS

*Price per linear foot.

* Max length is 10'



FREE-STANDING BACKSPLASH

PART #	HEIGHT	WIDTH	DEPTH	WEIGHT
HC FSBS 21 PC	20.75"	MAX 56"	0.75"	30LBS
HC FSBS 21 CP	20.75"	MAX 56"	0.75"	30LBS
HC FSBS 21 CP PC	20.75"	MAX 56"	0.75"	30LBS
HC FSBS 21 HW	20.75"	MAX 56"	0.75"	30LBS
HC FSBS 21 SS	20.75"	MAX 56"	0.75"	40LBS
HC FSBS 21 BL	20.75"	MAX 56"	0.75"	30LBS
HC FSBS 27 PC	26.75"	MAX 56"	0.75"	35LBS
HC FSBS 27 CP	26.75"	MAX 56"	0.75"	35LBS
HC FSBS 27 CP PC	26.75"	MAX 56"	0.75"	35LBS
HC FSBS 27 HW	26.75"	MAX 56"	0.75"	35LBS
HC FSBS 27 SS	26.75"	MAX 56"	0.75"	45LBS
HC FSBS 27 BL	26.75"	MAX 56"	0.75"	35LBS



*PC: Powder coated

*CP: Checker plate

*CP PC: Powder coated checker plate

*HW: Slatwall

*SS: Stainless steel

*BL: Backlit



FREE-STANDING PILLAR

PART #	Power	Height	Width	Depth	WEIGHT
<i>HC FSP 21</i>	no	20.75"	8"	8"	10LBS
<i>HC FSP 27</i>	no	26.75"	8"	8"	12.5LBS
<i>3P*</i>	yes*				5LBS

Optional Pillar Power Upgrade.

* 3P: Three outlets with one USB and one USBC



FREE-STANDING CABINET

PART #	Power	Height	Width	Depth	WEIGHT
<i>HC 212808</i>	no	20.75"	28"	10"	15LBS
<i>HC 213408</i>	no	20.75"	34"	12.5"	20LBS
<i>6P*</i>	yes*				5LBS

Optional Cabinet Power Upgrade.

* 6P: Six outlets



LATCHES

PART #	Color	Lockable
<i>Chrome Non-Lock</i>	Zinc	No
<i>Chrome Lock</i>	Zinc	Yes
<i>Black Non-Lock</i>	Flat Black	No
<i>Black Lock</i>	Flat Black	Yes

*Price upgrade per latch.

TOE KICK COVERS

PART #	HEIGHT	WIDTH	DEPTH	WEIGHT
<i>HC TKC</i>	6"	/foot	16 G	1LBS

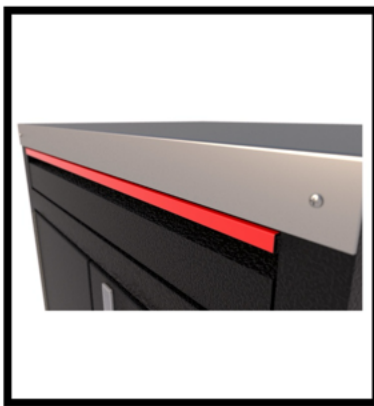
*Price per linear foot.



LIGHTING

PART #	HEIGHT	WIDTH	DEPTH	WEIGHT
HC LED	3/8"	/foot	5/16"	1Lbs
HC LED TX				1LBS
HC LED TXHD				1LBS

- *Price per linear foot.
- *Max 18' of linear cabinets
- *TXHD used for continuous use applications



POWDER COATED DRAWER TRIM

PART #	COLOR
PC TRIM	ANY

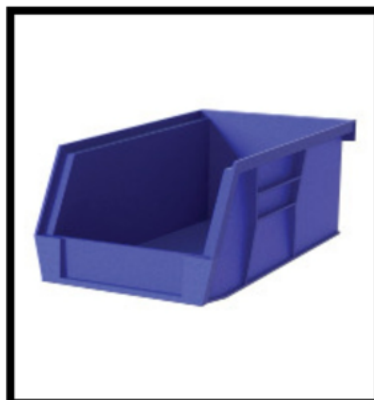
*Price per piece.



STRIPE DECAL

PART #	COLOR
HC DECAL	ANY

*Price per stripe.



BINS

PART #	HEIGHT	WIDTH	DEPTH	WEIGHT
Small Poly Bin	2.75"	4"	5"	0.1LBS
Large Poly Bin	2.75"	4"	7"	0.1LBS

Bins fit in a 4" tall drawer and priced individually.



SHELVES

PART #	HEIGHT	WIDTH	DEPTH	WEIGHT
HC 189	0.5"	19"	14"	4LBS
HC 132	0.5"	19"	24"	8LBS
HC 338	0.5"	25"	24"	10LBS
HC 085	0.5"	28"	14"	5LBS
HC 036	0.5"	28"	24"	10LBS
HC 010	0.5"	34"	14"	8LBS
HC 014	0.5"	34"	24"	15LBS
HC 150	0.5"	48"	14"	12LBS
HC 117	0.5"	48"	24"	20LBS
HC 375	0.5"	54"	24"	23LBS
HC 370	0.5"	66"	24"	25LBS

Closets come with 2 shelves. Upper & lowers come with 1 shelf. Eighteen inch uppers and corner cabinets do not have shelves.



PULL-OUT SHELVES

PART #	HEIGHT	WIDTH	DEPTH	WEIGHT
HC 346	0.5"	19"	24"	8LBS
HC 893*	0.5"	24"	24"	10LBS
HC 342	0.5"	28"	24"	12LBS
HC 343	0.5"	34"	24"	15LBS

*Standard textured black
 *Used has 48" half pull-out shelf



SHELF HANGER

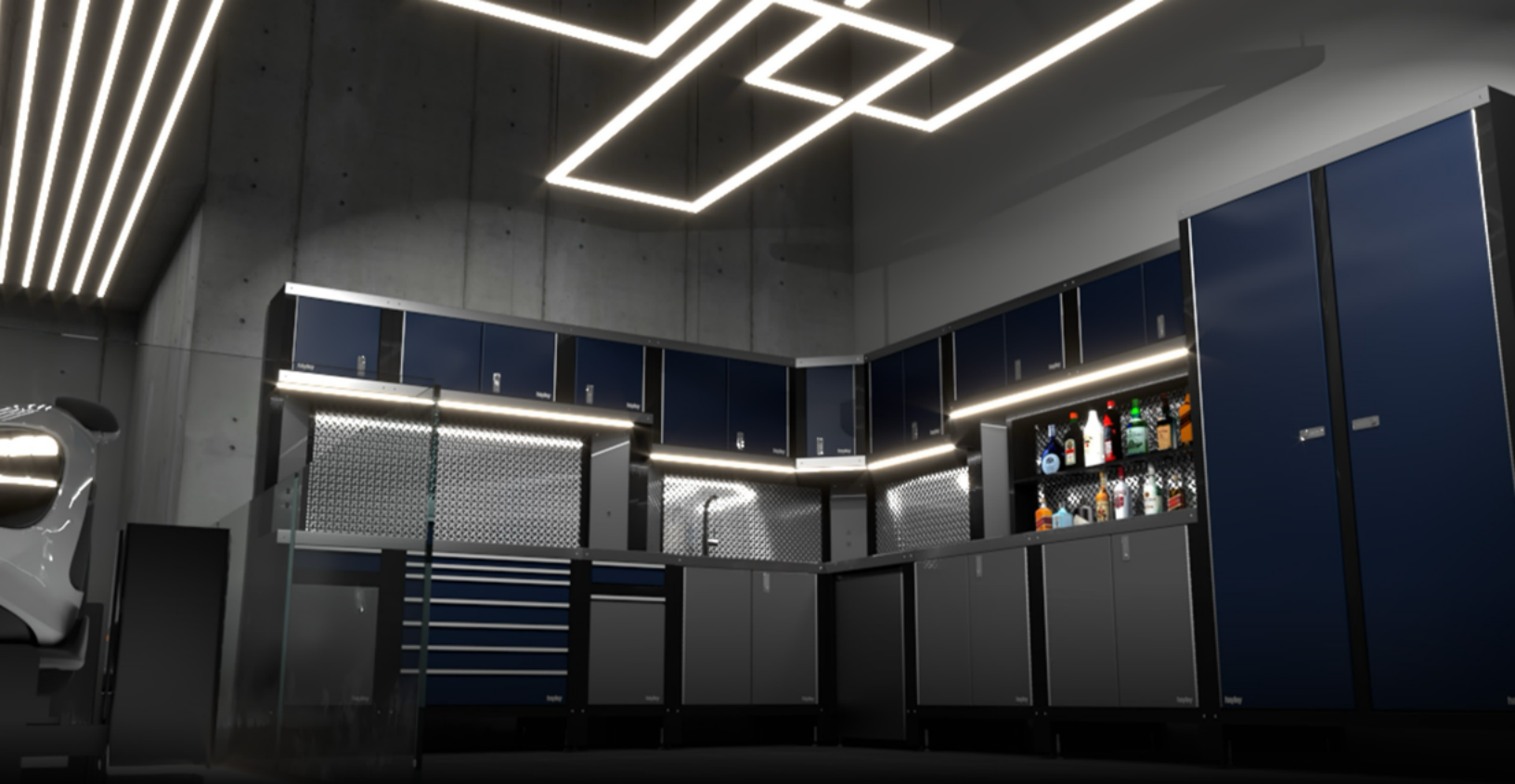
PART #	HEIGHT	WIDTH	DEPTH	WEIGHT
HC 033	3"	28"		5LBS
HC 034	3"	34"		5LBS
HC 037	3"	48"		10LBS

GA* Galvanized
 PC* Powder Coated



HANGING BAR

PART #	HEIGHT	WIDTH	DEPTH	WEIGHT
<i>HC 806</i>				LBS



HC CONFIGURATIONS



CABINETS

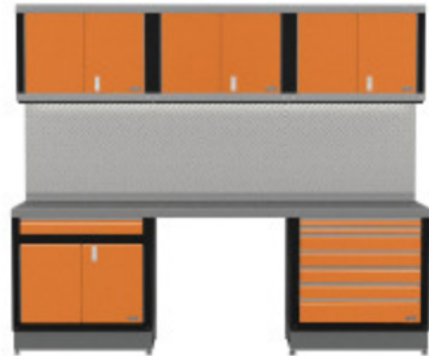
STANDARD CONFIGURATIONS

HC CONFIGURATION 1

81" Tall x 68" Wide x 24.5" Deep

HC CONFIGURATION 2

81" Tall x 102" Wide x 24.5" Deep



QUANTITY	PART #	DESCRIPTION
2	HC 243414	med 34" upper
1	HC 303424 D1	34" single drawer
1	HC 30324 D2	34" double drawer
6	CP 24	1/8" alum checker plate <24"
6	HC 098 GA	12 ga galvanized counter /foot
6	HC LED	LED /ft
1	HC LED TX	transformers for LEDs
6	HC 049	base channel /foot

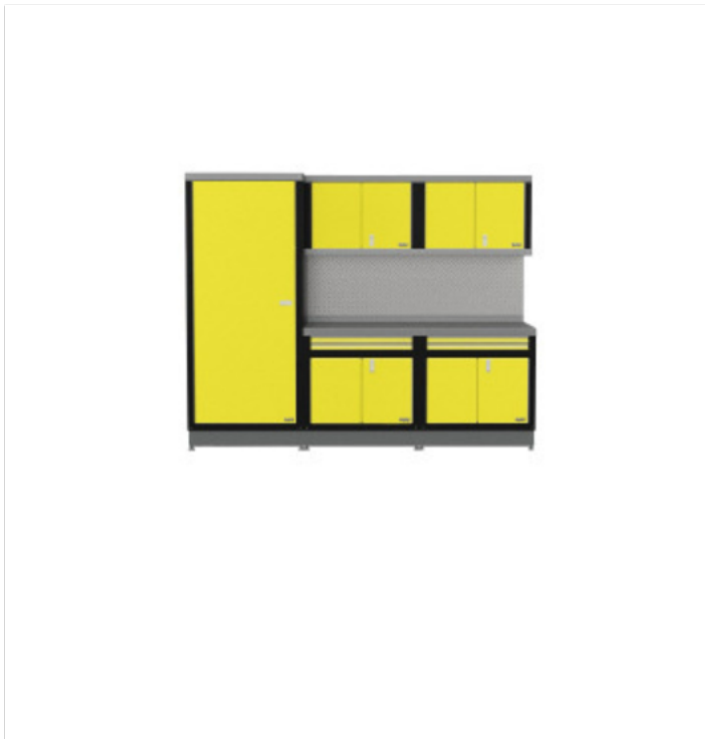
QUANTITY	PART #	DESCRIPTION
3	HC 243414	med 34" upper
1	HC 303424 D1	34" single drawer
1	HC 30324 D7	34" Tool Chest
9	CP 24	1/8" alum checker plate <24"
9	HC 098 GA	12 ga galvanized counter /foot
9	HC LED	LED /ft
1	HC LED TX	transformers for LEDs
6	HC 049	base channel /foot

CABINETS

STANDARD CONFIGURATIONS

HC CONFIGURATION 3

81" Tall x 102" Wide x 24.5" Deep



QUANTITY	PART #	DESCRIPTION
1	HC 753424	34" closet
2	HC 243414	Med 34" Upper
2	HC 30324 D2	34" double drawer
6	CP 24	1/8" alum checker plate <24"
6	HC 098 GA	12 ga galvanized counter /foot
6	HC LED	LED /ft
1	HC LED TX	transformers for LEDs
9	HC 049	base channel /foot

HC CONFIGURATION 4

81" Tall x 136" Wide x 24.5" Deep



QUANTITY	PART #	DESCRIPTION
1	HC 753424	34" closet
3	HC 243414	Med 34" Upper
3	HC 30324 D1	34" single drawer
9	CP 24	1/8" alum checker plate <24"
9	HC 098 GA	12 ga galvanized counter /foot
9	HC LED	LED /ft
1	HC LED TX	transformers for LEDs
12	HC 049	base channel /foot

CABINETS

STANDARD CONFIGURATIONS

HC CONFIGURATION 5

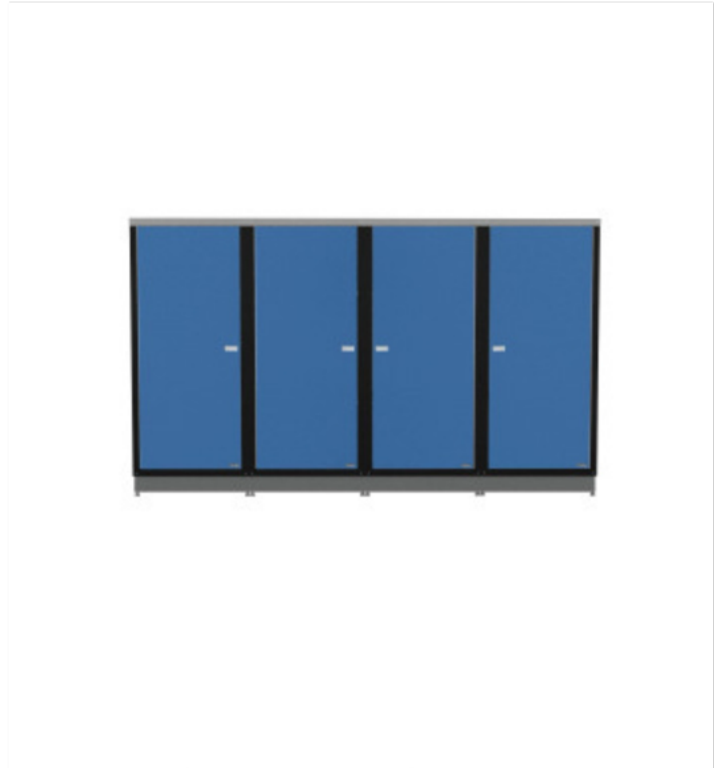
81" Tall x 170" Wide x 24.5" Deep



QUANTITY	PART #	DESCRIPTION
2	HC 753424	34" closet
3	HC 243414	Med 34" upper
2	HC 303424	34" lower
1	HC 303424 D7	34" Tool Chest
9	CP 24	1/8" alum checker plate <24"
9	HC 098 GA	12 ga galvanized counter /foot
9	HC LED	LED /ft
1	HC LED TX	transformers for LEDs
15	HC 049	base channel /foot

HC CONFIGURATION 6

81" Tall x 136" Wide x 24.5" Deep



QUANTITY	PART #	DESCRIPTION
4	HC 753424	34" closet
12	HC 049	base channel /foot

CABINETS FREESTANDING CONFIGURATIONS

HC FREE STANDING CONFIGURATION 1

81" Tall x 68" Wide x 24.5" Deep



HC FREE STANDING CONFIGURATION 2

81" Tall x 116" Wide x 24.5" Deep



QUANTITY	PART #	DESCRIPTION
2	HC 243414	Med 34" Upper
2	HC 303424	34" Standard Cabinet
4	HC FSL24	Single free standing leg 24.5"
2	HC FSP 21	21" Free standing pillar
1	HC FSBS 21 HW	21" Free standing slatwall backsplash
6	HC LED	LED /ft
1	HC LED TX	transformers for LEDs
6	HC 098 GA	12 ga Galvanized counter /foot

QUANTITY	PART #	DESCRIPTION
2	HC 243414	Med 34" Upper
1	HC 303424 D7	34" Tool Chest
1	HC 303424	34" Standard Cabinet
1	HC 754824	48" Closet Double Door
6	HC FSL 24	Single Free Standing Leg 24.5"
2	HC FSP 21	21" Free Standing Pillar
1	HC FSBS 21 CP	21" Free Standing Checker Plate Backsplash
6	HC LED	LED /ft
1	HC LED TX	Transformer for LED
6	HC 098 GA	12 ga Galvanized Counter /foot

CABINETS FREESTANDING CONFIGURATIONS

HC FREE STANDING CONFIGURATION 3

81" Tall x 72" Wide x 24.5" Deep



HC FREE STANDING CONFIGURATION 4

81" Tall x 136" Wide x 24.5" Deep



QUANTITY	PART #	DESCRIPTION
1	HC 243414	Med 34" Upper
2	HC 241914	Med 19" Upper
1	HC 303424 D7	34" Tool Chest
1	HC 301924 GB	19" Single Drawer Garbage Bin
1	HC 301924 PB	19" Parts Bin
6	HC FSL 24	Single Free Standing Leg 24.5"
2	HC FSP 21	21" Free Standing Pillar
1	HC FSBS 21 HW	21" Free Standing Slatwall Backsplash
6	HC LED	LED /ft
1	HC LED TX	Transformer for LED
6	HC 098 GA	12 ga Galvanized Counter /Foot

QUANTITY	PART #	DESCRIPTION
2	HC 243414	Med 34" Upper
1	HC 303424 D2	34" Double Drawer
1	HC 30324 D7	34" Tool Chest
2	HC 753424	34" CLOset
8	HC FSL24	Single Free Standing Leg 24.5"
2	HC FSP 21	21" Free Standing Pillar
1	HC FSBS 21 CP	21" Free Standing Checker Plate Backsplash
6	HC LED	LED /ft
1	HC LED TX	Transformer for LED
6	HC 098 GA	12 ga Galvanized Counter /foot

FREE STANDING CABINETS FREESTANDING CONFIGURATIONS

HC FREE STANDING CONFIGURATION 5

81" Tall x 232" Wide x 24.5" Deep



HC FREE STANDING CONFIGURATION 6

99" Tall x 232" Wide x 24.5" Deep



QUANTITY	PART #	DESCRIPTION
4	HC 243414	Med 34" Upper
2	HC 303424 D1	34" Single Drawer
2	HC 303424 D2	34" Double Drawer
2	HC 754824	48" Closet Double Door
12	HC FSL 24	Single Free Standing Leg 24.5"
4	HC FSP 21	21" Free Standing Pillar
2	HC FSBS 21 CP	21" Free Standing Checker Plate Backsplash
12	HC LED	LED /ft
1	HC LED TX	Transformer for LEDs
12	HC 098 GA	12 ga Galvanized Counter /Foot

QUANTITY	PART #	DESCRIPTION
2	HC 184824	Small 48" Deep Upper
4	HC 183424	Small 34" Deep Upper
4	HC 243414	Med 34" Upper
2	HC 303424 D1	34" Single Drawer
2	HC 303424 D7	34" Tool Chest
2	HC 754824	48" Double Door Closet
12	HC FSL24	Single Free Standing Leg 24.5"
4	HC FSP 21	21" Free Standing Pillar
2	HC FSBS 21 CP	21" Free Standing Checker Plate Backsplash
24	HC LED	LED /ft
2	HC LED TX	Transformer for LEDs
12	HC 098 GA	Galvanized Counter



sales@garagezillastl.com

www.garagezillastl.com

P.O. Box 64 Wentzville, MO 63385

